





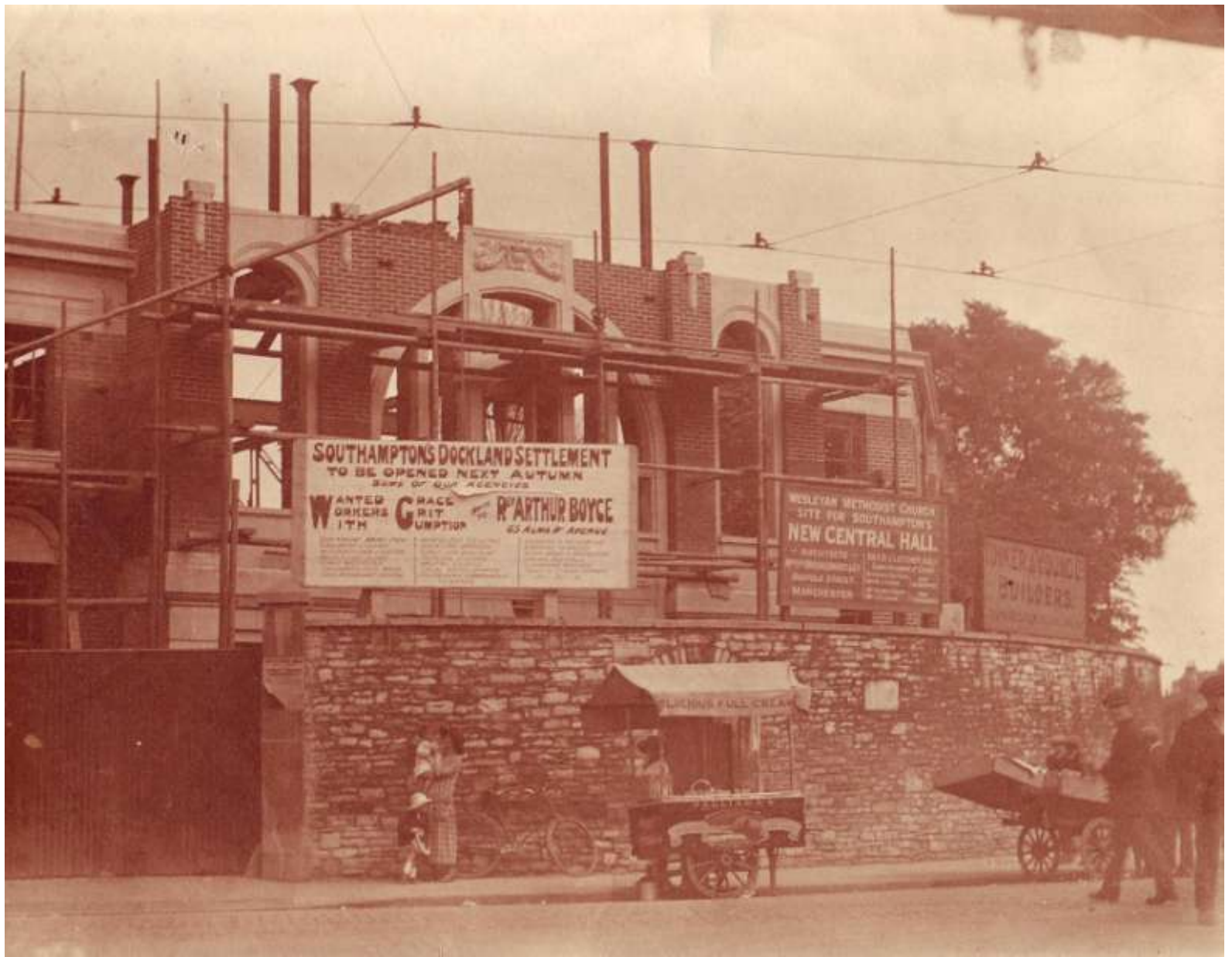








CENTRAL HALL



**SOUTHAMPTONS DOCKLAND SETTLEMENT**  
TO BE OPENED NEXT AUTUMN  
*WORKERS OF ALL RECEIVED*  
**WANTED WORKERS WITH GRACE BRIT**  
**R. ARTHUR BOYCE**  
45 ALBANY AVENUE

**WESLEYAN METHODIST CHURCH**  
SITE FOR SOUTHAMPTON'S  
**NEW CENTRAL HALL**  
ARCHITECTS: [illegible]  
BUILDERS: [illegible]  
MANCHESTER

**WREATHAM BUILDERS**

**LONDON FULL CREAM**

**SOUTHAMPTON'S DOCKLAND SETTLEMENT**  
**TO BE OPENED NEXT AUTUMN**  
*SOME OF OUR AGENCIES*

**W**ANTED  
**W**ORKERS  
**W**ITH

**G**RACE  
**G**RIT  
**G**UMPTION

WRITE  
TO

**R<sup>EV</sup> ARTHUR BOYCE**  
**65 ALMA A AVENUE**

SICK ROOMS AMONG FROM  
CHILDREN'S CLINIC  
MILKMAKING CARE & COOKING  
MILK & LARD DEPT.  
CHILD INSTITUTES  
CHILDREN'S PLAY ROOM  
DANCE & THEATRE CENTRE

ENTERTAINMENT SOCIETIES  
BOYS' LIFE BRIGADE  
GIRLS' LIFE BRIGADE  
PHYSICAL CULTURE  
MEDICAL CLINIC  
LEGAL ADVICE BUREAU  
PHOTOGRAPHY & CHEMISTRY  
CLASSES

COOKING & BAKING  
SEWING CLASSES  
MUSIC BAND & ORGAN CLUB  
GARDEN FELLOWS  
GARDENING BRIGADE  
DANCE & THEATRE



## List of Our Activities

(Continued from previous page)

### PERSONAL HYGIENE CLASSES.

N.B.—The Rev. A. S. Davis has undertaken the Secretaryship of the Southampton Branch of the National Council for Combating T.B.

### PICTURE SERVICES.—The Sun Service (P.M.) will be shown during the winter months.

**BELLEVUE WORKS.**—During the dark months of last winter we provided about 12,000 Sun Books for children and nursing mothers. The object was not only to cheer up children in the streets. Last fall clothing has proved a great boon to many families. Will you please get an order for the last of garments from Believing Books, etc. Persons wishing to contribute? Rev. Arthur S. Davis, Central Hall, Southampton. Expense would be met here in the year.

### MEETING MEETING in the Hall.

### TEACHERS' TRAINING CLASSES.

### YOUTH CLASSES, etc.

### WOMEN'S LITURGY.—Home and Church.

## OUR SUPREME OBJECTIVE

is to win the people of Southampton for our Saviour Christ and to the high purposes of His Kingdom. We believe true character is best stimulated by attention to positive interests.

What we affirm is of more importance than what we deny. Hence the Central Hall will become a busy hive of positive ideals and interests with CHRIST as the CENTRE.



Presented by "THE FUTURE" Rev. ARTHUR S. DAVIS, Min. C.P., who will be glad to give you any information you may require.

### A LAST WORD.

Define any positive facts whose inspirational value is mostly negative. Get us free!

**PLEASE SEND TO-DAY.**  
No promise can be too small!



WESLEYAN METHODIST CHURCH  
SOUTHAMPTON CIRCUIT

The  
GREAT  
FORWARD  
MOVEMENT  
at  
ENGLAND'S  
PREMIER  
PASSENGER  
PORT

Opening Ceremony  
of  
SOUTHAMPTON'S

**CENTRAL HALL**

Wednesday, February 18th, 1925

"The Conference heartily commends the opportunities at Southampton to the whole Conference."  
Resolution passed at Southampton, 1924





It's like nothing  
you've seen.  
Or heard.

**EXPERIENCE**

the breakthrough